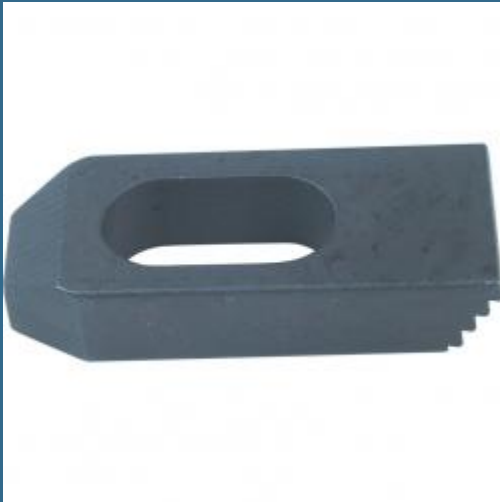


CROMWELL Clema in trepte CC25 CC2516100 38x100 mm M16 STEPPED CLAMP



Cod produs:

IND4251135G

preturile contin TVA 19%

Caracteristici

Dimensiuni ambraj:

Lungime mm: 101

Latime mm: 39

Inaltime mm: 20

Greutate g: 402

Despre produs

Material: otel carbon mediu. Duritate: HRC 32 - 28. Finisare suprafata: oxid negru.

Grupa de produs: 425

Pagina in catalogul 2019: 282

Pagina in catalogul 2021: 154

Cantitate livrata: 1 bucata