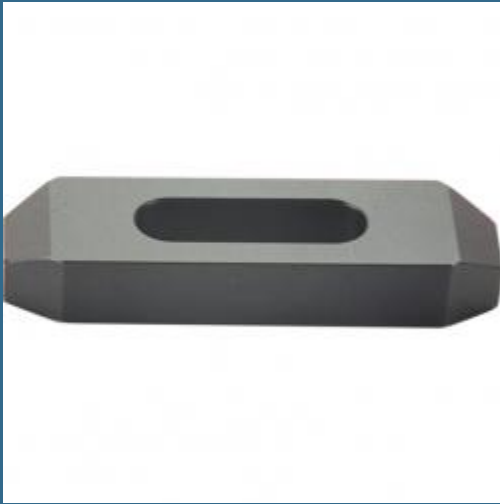


CROMWELL Clema simpla CC05 CC05 100x32 mm PLAIN CLAMP



Cod produs:

IND4251025G

preturile contin TVA 19%

Caracteristici

Dimensiuni ambraj:

Lungime mm: 101

Latime mm: 33

Inaltime mm: 20

Greutate g: 338

Despre produs

Material: otel carbon mediu. Tratat termic la: HRC 32 - 38. Finisare suprafata: oxid negru.

Grupa de produs: 425

Pagina in catalogul 2019: 280

Pagina in catalogul 2021: 152

Cantitate livrata: 1 bucata