




Always dispose of unwanted tools, accessories and packaging materials in an environmentally friendly manner.

DECLARATION OF CONFORMITY

We hereby certify that the **KOBE PH2016 LONG AIR HAMMER & CHISEL KIT**
(ORDER CODE: KBE-270-3416W)

Complies with all the relevant provisions of the
Machinery Directive: 2006/42/EC
Standards Applied:
ISO11148-7:2012, ISO28927-1:2019

Signed: 
Date: 26th March 2024
Name: Kevin Leak
Position: Quality Manager

KOBE TOOLS
Cromwell Group (Holdings) Limited,
65 Chartwell Drive, Wigston, Leicestershire,
England, LE18 2FS
Contact Us: contactus@cromwell.co.uk
Country of Origin :Taiwan



QUALITY GUARANTEE & WARRANTY

KOBE INDUSTRIAL AIR TOOLS carry a one year manufacturer's warranty.

KOBE INDUSTRIAL AIR TOOLS are designed & manufactured
to the highest standards & specifications
Assuring the quality and performance required by all sectors of industry.

KOBE INDUSTRIAL AIR TOOLS are fully guaranteed against
faulty materials & workmanship.

Should they be found to be defective, they will either be repaired or replaced
free of charge (fair wear and tear and/or misuse excepted).

Please retain supplier invoice as proof of purchase.

Cromwell Group (Holdings) Limited,
65 Chartwell Drive, Wigston, Leicestershire, England, LE18 2FS
Contact Us: contactus@cromwell.co.uk

© The Kennedy Group Ltd. 09/21

KOBE  TM

PROFESSIONAL AIR TOOLS

**HEAVY DUTY HAMMER
& CHISEL KIT**

**MODEL
PH2016**

**ORDER CODE
KBE-270-3416W**



- Compact & easy to control
- Multi-purpose tool suitable for use with cutters, punches, spot weld breakers & flat chisels
- Accepts all standard 0.401" shank tools
- Complete with Retaining Spring



WARNING: THE SAFETY INFORMATION GIVEN INSIDE MUST BE READ AND UNDERSTOOD BY ANY PERSON USING, INSTALLING, REPAIRING OR MAINTAINING THESE PRODUCTS.

OPERATOR'S MANUAL

Please retain this information for future reference.

You have purchased a quality industrial product that is designed for high performance and long service life. If correct use, safety and maintenance procedures are observed this machine will last for many years.

KOBE PROFESSIONAL AIR TOOLS have been specifically designed to help you work **SAFELY** and **EFFICIENTLY**. Your care and good judgement are the best protection against injury, but always ensure that the appropriate safety equipment is worn. All possible hazards cannot be covered here, but the most important ones have been highlighted.

GENERAL OPERATING HAZARDS

- Keep clear from all rotating spindles and moving parts
- Ensure that all long hair and loose clothing, ties, scarves, jewellery, etc., are secured or removed
- Always wear approved eye protection during operation, repair or maintenance of the tool, or whilst changing accessories. The operator of the tool is responsible for following accepted eye, face, respiratory, hearing and body protection.
- Ensure that all others in the area are wearing approved eye, face, respiratory, hearing and body protection. Even small projectiles can injure eyes and cause blindness.
- Wear gloves to protect hands from cuts and burns.
- Do not touch accessories during or after use.
- Never disable the safety lever throttle.
- Do not modify tools or accessories and only use for the task for which they have been designed.
- Ensure that all accessories are rated to the “Free” speed of the tool and intact before fitting or using.
- All users must be physically able and competent to handle the size, weight and power of the tools and have received appropriate training to perform the task.
- Note the tool rundown time. Control the tool as if it were under power.

SPECIFIC OPERATING HAZARDS

- Only use abrasives that are designed for the tool.
- Do not use cut off wheels or router bits in this tool.
- An abrasive fitted to a tool that is not designed for its use may cause serious injury or death.
- Make sure that insert tools have the correct shaft size for the collet.
- Protect abrasive accessories from exposure to water, solvents, high humidity, freezing temperature and extreme temperature changes.
- Store accessories in protective racks or

- compartments to prevent damage.
- The user is responsible for making sure that the specification label on the air tool is kept legible, indicating the model number, serial number and rpm. If not, reorder and replace.

WORKPLACE HAZARDS

- Slip/Trip/Fall is a major cause of serious injury or death. Be aware of excess hose around the work place.
- Maintain a balanced body position and secure footing.
- High sound levels can cause permanent hearing loss. Use approved hearing protection.
- Repetitive work motions, awkward positions and exposure to vibration can cause “Repetitive Strain Injuries”. If numbness, tingling, pain or whitening of the skin occurs consult a doctor.
- Avoid inhaling dust or handling debris from work process which can be harmful to your health.
- This tool is not intended for use in a flammable or combustible atmosphere and is not insulated for contact with electric power sources.
- Use a vice or clamping device to hold the work piece firmly in place.

AIR SUPPLY AND CONNECTION HAZARDS

- Air under pressure can cause severe injury.
- Always shut off air supply, drain hose of air pressure and disconnect tools from air supply when not in use, before changing accessories or when making repairs.
- Never direct air at yourself or anyone else.
- Whipping hoses can cause serious injury. Always check for damaged or loose hoses and fittings.
- Do not use quick disconnect couplings at tool. See instructions for suggested air supply.
- Whenever universal twist couplings are used, lock pins must be installed.
- Do not exceed maximum air pressure of 90psi/6.2bar.
- Do not carry the tool by the air hose.

| | | | |
|-----------------------|--------|-------------------------|-------|
| MODEL NUMBER..... | PH2016 | AIR HOSE SIZE (ID)..... | 10mm |
| BLOWS PER MINUTE..... | 3600 | AIR PRESSURE..... | 90PSI |
| STROKE LENGTH..... | 89mm | AIR CONSUMPTION..... | 4CFM |
| SHANK SIZE..... | 0.401" | OVERALL LENGTH..... | 202mm |
| AIR INLET THREAD..... | 1/4NPT | WEIGHT..... | 1.9kg |



YM01A
175 mm TAPER PUNCH
KBE2893001Y



YM04A
SINGLE BLADE PANEL
CUTTER
KBE2891004A



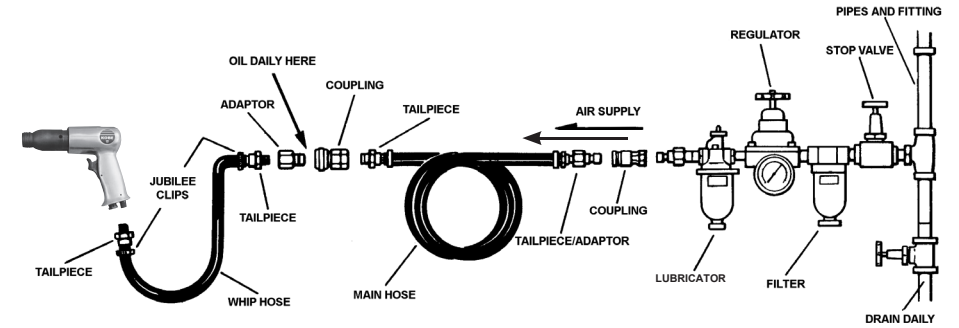
YM02A
175 x 19mm RIVET CUTTER
KBE2893002Y



YM25A
CLAW RIPPER & PANEL CUTTER -
175mm
KBE2891025A



YM05A
175 x 19mm SPOT WELD
KBE2893005Y



Connect tools to the air line using pipe, hose and fitting sizes listed in the specifications. Supply tools with 90psi/6.2bar of clean, dry air. A higher pressure will reduce the tool life.

Requirements for Quick Acting Couplings connected to Air Tools:

A leader hose of minimum length 500mm between the tool and the coupling is required in order to comply with Health and Safety Executive Guide **HS(G) 39, BS4575:2, ISO 15744:2002 and ISO 28927-10:2011.**

Air tools require lubrication throughout the life of the tool otherwise moisture in the compressed air will rust the air motor. Correct lubrication is vital for the maximum performance of the die grinder and an airline lubricator should be fitted into the system down stream of the filter. Failure to lubricate the tool at the air inlet will void your warranty.

Either use an air line lubricator with air tool oil adjusted to two drops per minute, or if an air line lubricator cannot be used, add air motor oil to the inlet once a day (See fig 1). ISO Grade VG22 oil is recommended.

Any excess oil in the motor is expelled immediately from the exhaust port. Always direct the exhaust port away from people or objects.

Do not lubricate the air hammer with flammable or volatile liquids such as kerosene, diesel or jet fuel.

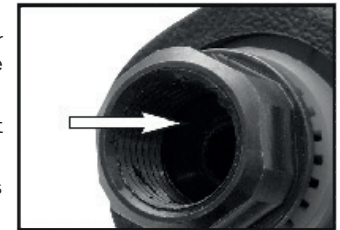


Fig. 1



DO NOT OPERATE TOOL WITHOUT CHISEL IN THE CYLINDER, OR WITH CHISEL NOT FULLY SEATED OR SECURED INTO THE CYLINDER. INTERNAL DAMAGE WILL RESULT IF PISTON IS ALLOWED TO STRIKE CYLINDER WALL.

1. Use support handle or other method to secure and support the work piece to a stable platform.
2. Do not force the tool. Use the correct tool for your application. Using the correct tool which is specifically designed for a select job will provide better tool performance and make the job easier.
3. Disconnect the air supply before making any adjustments, changing accessories, or storing the tool. Always disconnect the air supply before performing any inspection, maintenance or tool cleaning.
4. Use only accessories recommended by the manufacturer for your model.
Do not leave the tool unattended when it is connected to an air supply.
5. Use compressed air only.
6. To insert chisel, press loop on retainer aside, push chisel into cylinder and release loop.
Place cutting edge of chisel against workpiece, depress trigger.

Disassemble and inspect higher wear parts every three months if the tool is used every day and replace damaged or worn parts.

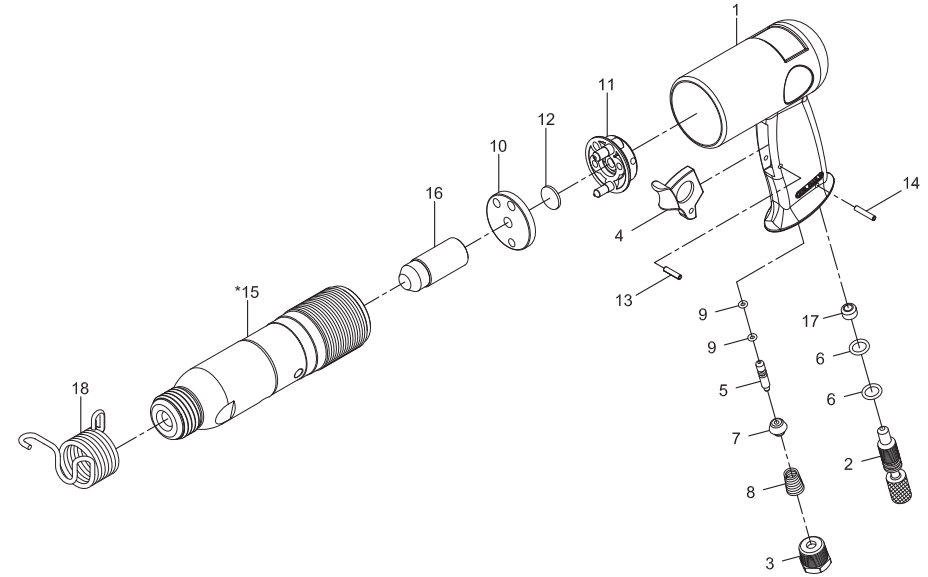
Replace as necessary all "O" rings, bearings and rotor blades, see parts break down. It is recommended that adequate stocks of standard service parts are held for servicing requirements.

The use of other than genuine Kobe replacement parts may result in safety hazards, decreased tool performance and increased maintenance.

Mineral spirits are recommended when cleaning the tool and its parts. Do not clean with any solvents or oils containing acids, esters, ketones, chlorinated hydrocarbons or nitro carbons. Do not use chemicals that have a low flash point.

For spare parts or servicing please contact your nearest agent. Remember to quote tool model number and spare part number when ordering spares.

When disposing of components, lubricants, etc. ensure that relevant environmental procedures are carried out.



| CROMWELL CODE | DESCRIPTION | QTY |
|---------------|--|-----|
| KBE2703654Y | REPAIR KIT FOR KBE2703416W INCLUDE PARTS #5 Valve Pin, #6 O-Ring (2), #8 Valve Spring, #9 O-Ring (2) | 1 |
| KBE2706570Q | REBUILD FOR KBE2703416W INCLUDE PARTS #10 Valve Case, #11 Valve Cover, #12 Valve, #16 Piston | 1 |